



The Witherbee Buzz

Vol. 12 No. 3

Newsletter

Fall 2015

The Witherbee Neighborhood Association includes the area bounded by 33rd to 56th and Randolph to "O" Streets

Witherbee Celebrates 2015 Annual Meeting November 5th



Witherbee will celebrate the year's volunteers, events, and awards Thursday November 5th.

- Board elections, Officer elections, coffee and cookies!
- The year in review and with coffee and cookies!
- Witherbee bingo with prizes, coffee and cookies!

Mike Kreikemeier has graciously offered to bring Witherbee Bingo back for another year. Our volunteers are out scouting for donations of prizes. Please join us to thank the people who have worked so hard to bring you this newsletter, the neighborhood cleanup, the ice cream social, the Yard-of-the-Month, and more. Without our volunteers we are nothing. Thank you all.

Join us in Tabitha's Lifequest Conference Room at 7 p.m., November 5th.

Little FREE Library Success Story



The Little Free Library, sponsored by Witherbee Neighborhood Association and constructed and installed by Witherbee resident Mark Holt, has been a great success, according to stewards Russ and Sherry Miller.

On the corner of 52nd and Lenox Circle, the library is surrounded by flowers, a rock garden, bench, and statue, giving the feel of a mini-park. Sherry Miller says it's a joy to see pedestrians stop to check out the contents. And the library works as it was intended to, with books leaving and new books taking their place, keeping the two shelves full all the time. The well constructed library has protected its contents from the heaviest of recent rains and high winds, thanks to Mark's superior craftsmanship.

A former Witherbee resident, moving into the Meadow Lane area, stopped by to deliver a car trunkful of children's books this summer. They are being gradually added as room is made in the little library. Thank you, Paula Bennett!

A few DVD's and CD's have also crept in from time to time, but books reign supreme and it seems they will for a long time to come!

It's a fact: Omaha Public Libraries checked out 1.1 million print books to patrons in 2014; Lincoln Public Libraries checked out 1.2 million print books in 2014. We are indeed a book-loving community. It's wonderful that Little Free Libraries can help contribute to the high degree of literacy in our city.



About Your Witherbee Neighborhood Association

Boundaries:

33rd to 56th & 'O' to Randolph

Meetings:

7:00 p.m. first Thursday of each
month at Tabitha LifeQuest Center,
48th and J.

www.facebook.com/witherbeena
www.WitherbeeNA.org

Mailing Address:

PO Box 5431
Lincoln, NE 68505
402-413-0156

Executive Board:

Rick Bagby, President
402-488-8567
Witherbeerick@gmail.com

Mike Kreikemeier, Vice-President
402-477-9194
mbk@windstream.net

Kathy Holland, Secretary
402-483-6397
rh30222@windstream.net

Fred Freytag, Treasurer
402-430-6658
fred@WitherbeeNA.org

Additional Board Members:

Cheryl Hejl 402-489-2557
chejl380@yahoo.com

Sandi Mahoney 402-570-7029
sandimahoney@gmail.com

Christine Nesmith 402-484-7673
jeepn68@gmail.com

Newsletter Committee Chair
Rick Bagby 402-488-8567
witherbeerick@gmail.com

Newsletter Distribution:
Jim Ihrie 402-483-4919
510 So. 39th St.

Web Development:
Fred Freytag 402-430-6658
fred@WitherbeeNA.org

President's Message

As I complete a second year as your President, I want to congratulate Witherbee residents for taking the initiative to better their own area and their own lives. A walkable livable family friendly neighborhood is the foundation of Witherbee. You make it happen. I have been honored to lead this organization for the last two years. It is now time for a fresh perspective, fresh energy. I will continue on the Board as Past President and am looking forward to working with your new leadership team. Witherbee is nothing without your participation, support, and energy. Thank you and keep it up!



Rick Bagby

Last month we heard from JJ Yost, Lincoln Parks and Rec planner on an upcoming study and report on Lincoln Dog Runs. We learned about the approach Lincoln has taken and will be proposing to take to serve the community in this area in years to come. Witherbee residents peppered Mr Yost with thoughtful questions and insight, with Mr Yost taking questions for far longer than the length of his prepared presentation. Watch for public review and input on this Dog Run review and proposal over the winter. We will use what we learned about the Parks & Rec planning process in our effort to create a master plan for Stuhr Park. Join us in January at our planning meeting to map out our efforts for the year!

Neighborly "Shout Out"

By Sandi Mahoney

With the Fall edition of the Buzz a "neighborly shout out" goes to Lynette Boyce from Kathy Stastny. Lynette played the piano for the Beatrice Playhouse in their September show of the musical "Chicago." This very talented neighbor has been teaching piano and voice for over 30 years. She said that working with the Beatrice Players was a wonderful experience!

A second "shout out" goes to the neighborhood volunteer "team" who delivered the summer newsletter: Mike Kreikemeier, Jim Ihrie, Kathy Stastny, Dan and Cheryl Wesolowski, Bryan Hurst, Jo Lambrecht, Russel Miller, Kathy Holland, Angela Dietsch, Cheryl Hejl, Tim Kovar, Jackie and myself. Jackie lives a few houses down the street from me and was most agreeable when "recruited". Angela Dietsch, who recently purchased a home in the Witherbee neighborhood, cheerfully responded that she and her "little one", making reference to her daughter, would love to walk the neighborhood to accomplish this task. It's especially nice to see new faces, while not forgetting to recognize the old timers! A special "shout out" to Mike and Jim, who delivered several routes and Tim Kovar who delivered five residential routes! Many hands make light work! THANKS to all!

www.WitherbeeNA.org

Fall 2015

Putting on the Glitz 2015 Holiday Lighting Event

By Sandi Mahoney

The holiday season is rapidly approaching! We hereby invite ALL neighbors to participate in this annual event. Show-off your creativity by decorating/lighting your homes/yards,-or- uniting with our "Nominator Unit" - or - joining our "Judge Bunch."

Since our Witherbee neighborhood area is large, extending from 33rd to 56th streets and O street to Randolph, we identified three subsections to organize the nominations of this J-O-Y process. The three subsections are #J: from 33rd to 40th Street, #O: from 40th to 48th Street, # Y: from 48th to 56th Street. Two or three nominators are needed to represent area J, or O, or Y, and will select and present addresses of the most outstanding displays from their subsection to the anonymous judges. As in the past, you may nominate your home or your neighbor's home and these nominations will be added to the list and presented to the judges also.

After our judges receive the list of addresses nominated from the three neighborhood subsections, they will be cruisin' and reviewin' the homes nominated. The judges will determine the "Magnificent Seven" of 2015, the one home display from the entire Witherbee neighborhood that best represents each of the seven categories listed below.

Incidentally, the identity of the judges is so secret, that as this BUZZ goes to press, even our committee does not know who they are among us. Our recruitment campaign for our "Judge Bunch" extends to individuals or families, anyone interested in taking on this "royal" position.

All nominated addresses will be posted on our web site and our Facebook page. Final date for nominations is Thursday, December 10th Judging will occur on December 13th and 14th. The Magnificent Seven of 2015 will be announced and winners will receive their awards within a few days.

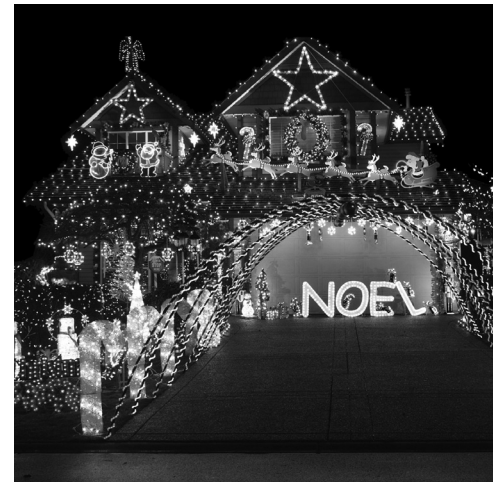
The Seven Categories Are:

- 1) Lincoln Electric System Superior Customer Award (Most Lights)
- 2) Simple Elegance Award
- 3) Animated Antics Award
- 4) Ultra Inflatable Award
- 5) Rooftop Award
- 6) Visions of Sugarplums Award (Kids Choice Award)
- 7) Best Monochromatic Award

We hope our 2015 Holiday Lighting event will celebrate the highest number of involved neighbors in the history of our WNA. If you have questions or are eager to be on the "Nominator Unit" or joining the "Judge Bunch", please contact Rick Bagby, Kathy Stastny, Sandi Mahoney or Kathy Holland per phone or email.

Fall 2015

www.facebook.com/WitherbeeNA



Witherbee

\$1 off a Combo Meal



Good at the 48th & O Street Runza® Restaurant location. Not good with any other coupon or discount. Substitutions and upsizing extra. One coupon per person or car per visit. **Expires 11/30/15.**

Runza® is a registered trademark of Runza® National, Inc.

Witherbee

\$2 off a 1/2 & 1/2 Combo Meal



Good at the 48th & O Street Braeda® Fresh Express Cafe location. Additions and substitutions extra. One coupon per person or order. **Expires 11/30/15.**

Page 3

January Meeting

January 7th, 2016

WNA Membership and Board Meeting.

- Annual priority and project planning meeting.
- 7-8:30 pm, Tabitha Lifequest Conference Center
- Membership and Board Meeting combined.
- Planning meeting. Goals and agenda for the year. Help us set priorities and projects.
- Nominate your neighbor to lead a project.



Marcia Murray ~ Realtor®
"A Lifetime of Caring"

Cellular: (402) 432-3989


Office: (402) 434-3800

Fax: (402) 434-3801

email: marcia.murray@woodsbros.com

Website: www.MarciaCares.com




Lincolnshire
7141 "A" Street
Lincoln, NE 68510



August Yard of the Month

Laura Avenue, from 34th – 36th Streets

By Kathy Holland

The August Yard of the Month was awarded to the neighbors that live on Laura Avenue, from 34th – 36th streets. This may be the first time this award has gone to a group beautification project.

The work to spruce up the three islands that sit between 34th – 36th streets on Laura Avenue (just north of Randolph St) began when neighbors in this area decided to quit complaining about the appearance of the islands and take some action. Neighbors communicated, called a meeting and began the initial planning process. Talks with the Lincoln Parks and Recreation Department and Lincoln Electric System resulted in a buy-in of the project by these City entities and the provision of soil, grass seed and mulch from Parks & Rec and painting of the light poles that sit on the islands by LES. A mini-grant was received from the Lincoln Parks Foundation which provided funds for plantings for the center island. Reseeding of the grass on the east and west islands occurred in the fall of 2013. Preparation of the soil in the center of the island along with planting of low maintenance perennials, shrubs and ground cover took place in the summer of 2014. This past summer the addition of some donated boulders/rocks has further improved curb appeal. Neighbors have also planted some annuals for added color.

Neighbors along Laura Avenue have contributed ideas, their own expertise in amending the soil for planting and landscape ideas. Other neighbors have contributed time and work hours, plantings from their own gardens or financial donations. In speaking with neighbors in the area, the beautification project remains a work in progress with continual changes in the landscape, the addition or movement of plants based on sunny or shady areas. Those I spoke with agree that this project has not only added beauty to their surroundings but a sense of community for those that live on Laura Avenue.

Congratulations to neighbors along Laura Avenue for a job well done!!

Fall Into a Great Loan Deal!

Through November 13, 2015 - Loans are on Sale!!

Receive up to a 1%* APR discount on any new money loan of \$5,000 or more.

Spirit of America will sweeten the deal with:

- ★ Deferred payments Up to 90 days for qualified applicants and loan types
- ★ Low priced Service Warranties
- ★ AssurancePlus GAP
- ★ Free Automatic payment, direct deposit and payroll deduction

*Certain restrictions apply. See Credit Union for the details.

SPIRIT OF AMERICA

FEDERAL CREDIT UNION

325 North 52nd Street
Lincoln NE 68505-0556
402-467-1102

www.spiritofamericafcu.org



City Offices

Animal Complaints.....	441-7900
Buried Lines.....	477-0547
City Council Representatives.....	441-7515
Crime Stoppers.....	475-3600
Household Hazardous Waste.....	441-8022
Housing Codes.....	441-7785
Mayor's Office.....	441-7511, 441-6300
Neighborhood Watch.....	441-7204
Parks & Recreation.....	441-7847
Quality of Life (24 hour anonymous complaints, suggestions).....	441-6300
Sidewalks (repair, shovel, etc.).....	441-7541
Weed Problems.....	441-7817
Zoning Violations.....	441-7521



September Yard of the Month

717 So. 55th Street

By Kathy Holland

The September Yard of the Month was awarded to Nina & Steve Trumble at 717 So. 55th Street. Nina & Steve have lived in their home for 10 years. About 7-8 years ago, Nina and her mother began the transformation from a grass lawn to an attractive yard with less maintenance ("no mowing!") and drought tolerant plants. Nina credits her mother for the landscaping plan, amending the soil and helping with the planting and mulching.

The landscape includes a variety of tall grasses including Carl Forester, Pampas and Zebra. Shrubs include Barberry (Aurea and Crimson Pygmy) and Rose of Sharon. Trees such as a dwarf Alberta Spruce and a Mugo Pine create a landscape with varied height. Intermixed among the shrubs, tall grasses, yucca plants and trees are perennials such as iris, peonies, dwarf lilac and a shrub rose. Over time they have added a path made of brick, flagstone and other decorative stones and gravel.

The picture does not do this yard justice due to the variety of plantings throughout. Congratulations to the Trumble family and Nina's mother for their foresight in planning a drought tolerant landscape with little maintenance (NO Mowing!).

Fall 2015

www.facebook.com/WitherbeeNA



327-0705

Hours:
M.-F. 8-6
Sat. 8-12

Jeff Jacobson, DVM
4145 "O" Street
Visit our website for useful information about your family pet. We Care.
www.jacobsonvet.com

Edward Jones® Making Sense of Investing



Debra J. Zimmer, AAMS®
Financial Advisor
3031 "O" Street, Suite 106
Lincoln, NE 68510
Ph. 402-476-2266 • 800-497-4310
Fax 888-361-9101
debra.zimmer@edwardjones.com
www.edwardjones.com

SUPER SAVER

48th & O St.

Love coupons? Visit www.Super-Saver.com
for great savings with web coupons!

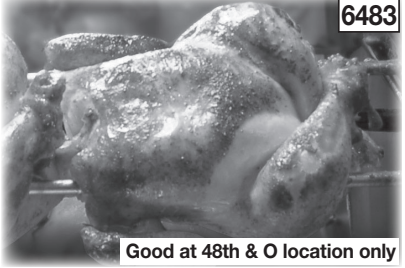
Snip & Super Save!

SUPER SAVER

Deli Fresh
Rotisserie
Chicken

\$5.48

With additional
\$10 purchase



6483

Good at 48th & O location only
Limit one coupon per customer.
Expires December 31, 2015

Store Phone
402-464-8552

Pharmacy
402-464-8822

**We Sell
For LESS!**
Good at 48th & O location only

Vital Signs Report Forms Basis for Prosper Lincoln Initiative

COMMUNITY INVOLVEMENT AND CULTURE

A vibrant community has residents that volunteer, vote, promote social causes, donate to charitable organizations, support the arts, and otherwise participate in creating a sense of place. Lincoln prides itself as being a place where neighbors look out for each other, where there are increasing cultural opportunities, and where people care about strengthening and enhancing our community's amenities. Community involvement can be a difficult concept to measure since it can mean different things to different people and because some of the "connectedness" can be difficult to quantify. The measures we've selected each tap some component of involvement.

Our results suggest, perhaps counter to community perceptions, that Lincoln looks very much like the rest of the country in terms of voting and charitable giving. Per capita, arts organization revenues are on the lower end when compared to peer communities. Lincoln has somewhat greater numbers of charitable and cultural non-profit organizations, but support for these institutions lags. Nebraskans volunteer at greater rates than residents of other states; however, data is not available to evaluate

whether this is true for Lincoln at the city or county level.
VOTER TURNOUT IS AVERAGE

Over the past 40 years the percentage of persons who vote in elections has steadily declined nationally, with voters typically being older, more affluent, better educated, and White. Voter turnout is usually higher in years of presidential elections. In Lancaster County, residents vote at about the same rate as the rest of Nebraska and the nation. Lancaster County voters follow the expected pattern of greater turnout in presidential election years (approximately 60% of the 18 and older population) and lesser in non-presidential election years (approximately 40% of the 18 and older population).

VOLUNTEERING IN NEBRASKA IS COMPARATIVELY HIGH, BUT DECLINING

Data on volunteering is only available at the state level. Nebraska ranks as the sixth highest for rate of volunteering of the 50 states and Washington DC. Even though rural individuals tend to volunteer at a higher rate than either suburban or urban individuals, Nebraska exceeds the national averages when accounting for place of residence (Figure 67). In 2013, Nebraskans contributed approximately 58.5 million hours of service. Like the rest of the nation, approximately one-third of volunteer hours were committed to religious organizations, followed by educational and social service organizations.

Did you know that winter is the perfect time to prune/remove most trees?

- Huge discounts for winter tree work.
- Foliage is gone, so structure of branches is clearly visible.
- The tree is dormant, eliminating bleeding of sap from fresh cuts.
- Hard ground makes for better equipment access.
- Convenience! It is easy for a homeowner to be inundated with projects in the spring and summer, so, why not reserve tree work for winter.

Let the Tree Guys take care of it!

402-438-8733



2200 S Folsom Ct.,
Lincoln, NE 68522.
www.lincolntreeguys.com



MIDTOWN LINCOLN 5010 "O" STREET HyVee Pharmacy



402.465.0413

8 a.m. to 10 p.m. M-F
9 a.m. to 6 p.m. Sat
10 a.m. to 6 p.m. Sun

- Drive Thru
- Free Delivery
- Flu Vaccinations

\$4 OR \$10

30-day 90-day

Convenience, Care and Counseling.

Ask your Lincoln Hy-Vee pharmacist or your physician if your medication is available in generic form.

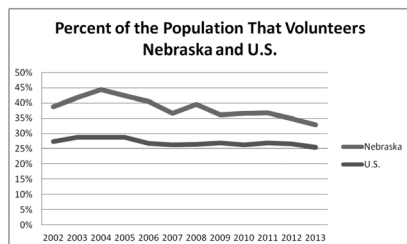
Go to hy-veepharmacy.com for a complete list.

Some restrictions may apply. Not applicable with all insurance plans.

Transferring prescriptions has never been so easy. Just visit or call your Lincoln Hy-Vee Pharmacy and we will do all the work!

HyVee Pharmacy

FIGURE 67. VOLUNTEERING RATE



Source: Corporation for National Community Services

INDIVIDUAL CHARITABLE GIVING IS AVERAGE, BUT HAS DECLINED

Two measures of charitable giving are individual giving and organizational charitable giving through foundations. Related to individual giving, the average household in Lincoln contributes about 3.3% of income to charitable organizations. This is equivalent to giving in Nebraska (3.3%) and nationally (3.0%). Charitable giving has declined since 2008 when giving rates were 4.3% in Lincoln, 4.1% in Nebraska, and 4.7% nationally.

LINCOLN HAS COMPARATIVELY LARGE GIVING BY CHARITABLE FOUNDATIONS

When compared to its peer communities, Lincoln foundations grant a comparatively large amount annually.

This is page 81 and 82 of the report: Lincoln Vital Signs 2015 © 2015 Lincoln Community Foundation. Used with permission.

Download Our Free[^] Mobile Banking App

MOBILE DEPOSITS

PAY BILLS

CHECK BALANCES

TRANSFER MONEY

FIND ATMS

Available on the Google play

Available on the App Store

[^]Your cell phone provider may charge additional fees for web access or text messaging.



westgatebank.com | 402-434-3456 | member FDIC



Your Witherbee Family Restaurant

Coupon

\$5.00 OFF

Two adult entrees with two beverages.

Redeemable at 48th and 'O' only

Limit one coupon per meal — Expires January 31, 2016

Prompt
Courteous



Friendly
Service

121 No. 48th
Lincoln, NE 68594
402-467-2674

Free Wireless Internet

OPEN
Mon. - Sun.

Where can you
turn when you
have

questions
about Elder
care?



11_0415_AD(WitherbeeBz)_TAB

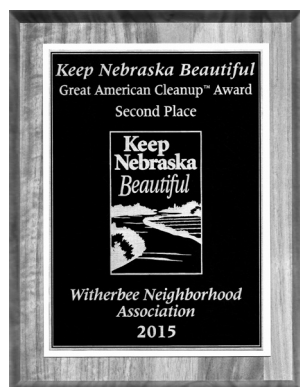
TABITHA

Your answer for Elder Care

402.486.8520 | WWW.TABITHA.ORG

Witherbee Cleanup Wins Award

By Mike Kreikemeier



Witherbee Neighborhood Association was honored with a second place plaque at the annual Keep Nebraska Beautiful awards luncheon. Mike Kreikemeier, WNA vice-president, attended the lunch and received the award from Mat Hazen, KNB Chairman. The luncheon was held at the Hilton Garden Inn in the Lincoln Haymarket on Thursday, August 20th, 2015. Adam Rhoads, Environmental Health Educator with the Lincoln-Lancaster County Health Department, nominated Witherbee Neighborhood

Association for the award. Adam has helped WNA put on a very successful Neighborhood Cleanup for several years. The Witherbee Cleanup event was recognized for its emphasis on recycling and reusing materials. The cleanup event works with Eco-Stores Nebraska, Goodwill & Firestone Complete Auto Care to reuse and recycle tires, building materials, clothing, electronics and household items. Mike was honored to accept the award on behalf of all of the Witherbee volunteers that help out at the annual event. A special thank you to neighbors Dan Weslowski and Bryan Hurst, the event co-chairs for the past several years. Mike enjoyed the lunch and noted "The WNA cleanup is a great neighborhood event. It brings neighbors together and cleans up the area. It is nice to receive this award and be recognized for our efforts."



Mike Kreikemeier accepts the 2nd place award from Mat Hazen, KNB Board Chairman.



Mike Kreikemeier accepts 2nd place award at KNB luncheon. from left to right Diane Bartels, George Pinkerton, Adam Rhoads, Mike Kreikemeier, Mat Hazen, Paul Johnson & Greg Kurtzer. Diane, George, Paul and Greg are KLLCB (Keep Lincoln & Lancaster County Beautiful) Advisory Committee members.

December Meeting

Prosper Lincoln. Dec 3rd

Where are we, where are we headed, and how will we get there? Come learn how Witherbee can fit into a community-wide effort to make Lincoln better. Prosper Lincoln is bringing together our community to help us all understand how different areas of our lives interact. Join us December 3rd to learn how a neighborhood can make a difference.

Lincoln has many groups working to make Lincoln better, each group focusing on their own area of interest. But, how do they affect each other? Can we increase the effectiveness of each by understanding the others? How does health impact economic development? Education impact poverty? Transportation impact public safety? How do neighborhoods affect health, safety, poverty, economic development, longevity, the arts, and education. Does anybody even look that these cross impacts? Yes!

Meet Prosper Lincoln.

Here in our neighborhood we often say "Many hands make light work." We know that working together we can accomplish more, make an impact on our own lives and the lives of our friends and neighbors. Catherine Lang,

Community Coordinator for Prosper Lincoln, former State of Nebraska Department of Economic Development Director, former State Property Tax Administrator, will fill us in on the effort.

From Prosper Lincoln overview materials:

Youth Success

How can we best nurture youth success from cradle to career? What more might be done to ensure our children have access to basic needs and opportunities needed for career success?

Economic Prosperity

How can we cultivate a skilled workforce, foster entrepreneurial activity and support efforts that attract and keep professionals in our community?

Quality of Life

How do we enhance our neighborhoods, provide arts and cultural opportunities and improve the health and well-being of Lincoln residents?

More detail and a comprehensive report can be found at: www.prosperlincoln.org